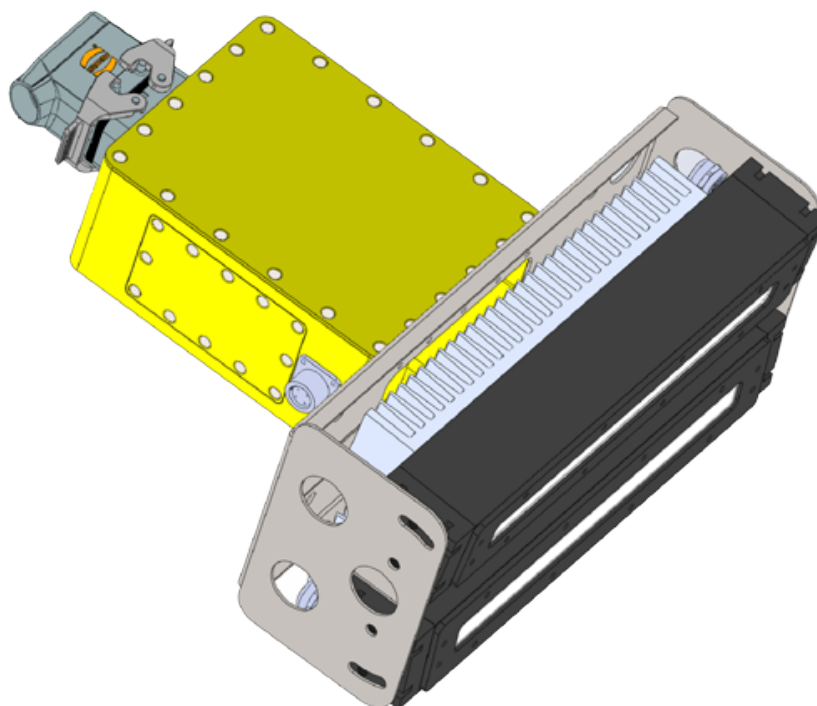


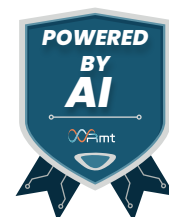
# HRS

## High Resolution Surface



The ADTS High Resolution Surface (**HRS**) has been designed to create a high resolution view of any aspect of the rail infrastructure.

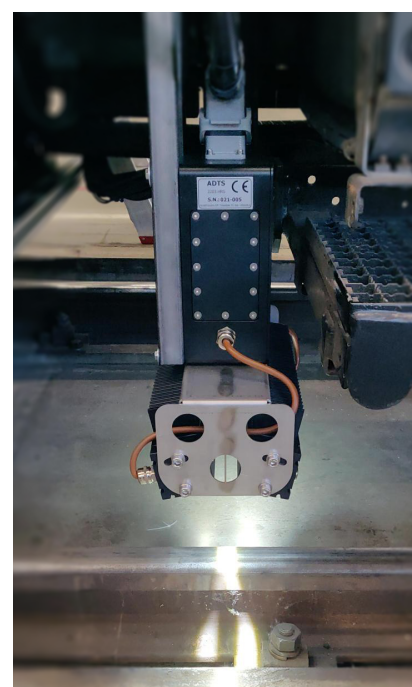
The **HRS** is designed to be mounted on any vehicle and oriented to the desired target component. During the full operational speed of the vehicle the targets will be acquired with sub-millimeter imaging: useful for rails, fasteners, sleepers, slabs, etc.



ADTS **HRS** comes with its AI for supporting the autonomous targeting and diagnostic of the desired characteristics like cracks, presence, deformation, status, etc

### Technical description

Resolution	Up to 0.01 mm/pixel
Image Type:	Colour (RGB 8) or Mono
Max vehicle speed:	Up to 200km/h
Max target distance:	Up to 1'000mm
Operating temperature:	-20° C ÷ +50° C
Humidity:	15 to 85% (no condensation)
Output Power	500W
Voltage	24VDC or 220 110VAC



\*Thanks to the full technical control over the HRS develop, it is possible to have a dedicated customization in order to get the optimum “performance vs cost” balance.

Automotive Diagnostic Technology Solution S.R.L.

Via dell'Economia 8/M, 35010 Trebaseleghe, Padova Italy

Email : [info@adts.it](mailto:info@adts.it) Web: [www.adts.it](http://www.adts.it)